

# Instructions for use of portable ultrasonic knife



(Facial body anti-aging instrument)

## Preface

Dear users:

Welcome to choose our latest product, portable ultrasonic knife. portable ultrasonic knife is a more authoritative and high-end anti-aging system instrument after hot Maggie. This technology has no bleeding, no incision, no scar, no trauma. It has replaced the various effects of traditional facial anti-aging and wrinkle removing surgery, including face thinning, double chin removal, firming, wrinkle removal, skin tightening, etc. to completely solve the problem of face And all parts of the body aging drooping problem, contour reconstruction to restore visual youth! After treatment can be normal make-up, completely does not affect daily life. Longer lasting than the previous single line technology. Before using the instrument, please read this manual carefully and operate the instrument in strict accordance with the instructions in the manual.

important clause:

1. The contents of this manual or the specifications of this product are subject to change without notice.
2. The company reserves the right to change the specifications and materials contained therein without notice. Meanwhile, the company shall not be liable for the damages (including consequential damages) caused by the trust of the quoted materials, including but not limited to the printing errors.

Catalog

1、 Instrument overview ..... 4

2、 Instrument principle ..... 4

3、 Advantages of instrument technology ..... 4

4、 Instrument technical parameters ..... 5

5、 Name of each part of the instrument ..... 6

6、 Installation of instruments ..... 7

7、 Introduction of instrument interface keys ..... 8

8、 Operation steps of the instrument ..... 12

9、 Instrument setting and treatment reference ..... 12

10、 Precautions and maintenance of the instrument ..... 13

11、 Taboo for instrument users ..... 13

12、 Common problems of instrument ..... 14

13、 Instrument maintenance ..... 15

## 一、 Instrument overview

The company's latest product, portable ultrasonic knife skin beauty instrument, can achieve three perfect effects of skin firming, wrinkle removing and shaping. The advanced part of ultrasonic scalpel is to use the most advanced ultrasonic energy, which can penetrate deeply and reach the skin's SMAS layer, making collagen produce immediate contraction and stimulating collagen fiber net, so as to enhance the skin's elasticity from the bottom of the skin (safer self repair mechanism). This is currently the most safe and effective way to treat facial skin aging and sagging in the beauty industry. It is a cross era skin beautifying instrument with no wound, recovery period, bleeding and multiple treatments. The magical wrinkle removing and improving effect of portable ultrasonic knife skin beautifying instrument has been recognized by the authority of the beauty industry, and is known as the miracle light of eternal youth!

## 二、 Instrument principle

With its unique high-energy focused ultrasound, it can directly reach the SMAS layer, improve the suspension of the SMAS fascia, and comprehensively solve the problem of facial ptosis and relaxation. It precisely locates the energy of ultrasound in the 4.5mm fascia layer under the skin, plays the role of muscle growth and pulling in the fascia layer, and achieves the best effect of shaping, lifting and tightening. Acting on the 3 mm collagen layer under the skin, it can regenerate the collagen, recover the elasticity, whiten, wrinkle, shrink the pores and other aging problems of the skin. At the same time, because the energy is skimming over the epidermis, it does not need to worry about the injury of the epidermis at all, it can also make the skin get the effect of rapid lifting, tightening the contour and quickly smoothing the wrinkles!

## 三、 Advantages of instrument technology

1、 At most 11 lines can be made for one engine, and the maximum energy area width is 10 mm. According to the skin area

The corresponding parameters of size adjustment can greatly shorten the operation time, make the energy point of the skin more uniform and have better curative effect.

- 2、 Using the most advanced high-tech technology, two therapeutic heads are equipped according to the facial skin condition, with precise effect

In different skin depths, the treatment energy is slightly over the epidermis, 100% without any damage.

- 3、 It has heat effect on collagen and collagen fiber of dermis and heat effect on fat layer and fascia layer (SMAs)

Stimulation, the therapeutic effect is far better than gemagi.

- 4、 The operation is simple and convenient. No need for consumables, greatly saving treatment costs.
- 5、 The effect of tightening and shaping can be seen immediately after treatment, and it can be maintained for at least 18-24 months every time

Negative growth of skin age once a year.

- 6、 Make up immediately after treatment, without affecting normal life and work.

#### 四、 Instrument technical parameters

working voltage: 110V – 220V

working frequency: 4MHz

Instrument size: 440mm\*300mm\*380mm

maximum power: 120VA

Fuse: 5A

Net weight: About 10kg (excluding base)

5、 Name of each part of the instrument



1、 A brief introduction to the function of the therapeutic head

Function head	picture	Depth and efficacy of skin treatment
1.5mm functional head		Direct energy to the dermis makes the fibrous tissue mesh and dense, making the skin smooth and delicate
3.0mm functional head		Direct energy to skin subcutaneous tissue, accelerate cell activity, regenerate and recombine collagen, increase skin elasticity and firm skin

<p>4.5mm functional head</p>		<p>The energy flows directly to the fascia layer to make the fascia layer solidify, produce tension and enhance to achieve the effect of the fascia layer suspending and pulling the skin</p>
------------------------------	--	---

Note: portable ultrasonic knife has body probes of 16mm, 13mm, 10mm, 8mm and 6mm, which can be selected to treat body parts according to needs.

## 六、Installation of instruments

Insert the handle cable into the socket at the back of the machine and fix the screw. Insert the power cable into the power socket at the back and connect the power supply line suitable for the voltage within the normal working range of the instrument. The installation of the probe is shown in the figure below.



## 七、 Introduction of instrument interface keys1

### start-up

Check whether the connection of the instrument is normal. Turn on the power of the instrument, press the power switch of the host machine, and the machine will start immediately, and enter the professional work standby interface automatically (see Figure 1).



Figure 1

## 2、 Function introduction of professional working interface

Various parameters can be adjusted in the standby interface, such as [width (mm)] for the total width of the energy area, [length (mm)] for the total length of the ultrasonic knife energy area, [clearance (mm)] for the spacing between freezing points in each line of the energy area, [pitch (mm)] for the distance between each line of the energy area, [power (J)] for the ultrasonic knife energy, click [- ] (decrease)



+] (increase) adjust the size, and [patienttotal] indicates to record the number of treatment, click [clear] to clear the number of treatment, click [start] to start the instrument, click [stop] to stop the instrument, and [save] indicates the parameter storage mode or the parameter selection of [M1] - [M5], and click [back] to enter the operation mode selection interface.

### 3、 Operation mode selection interface

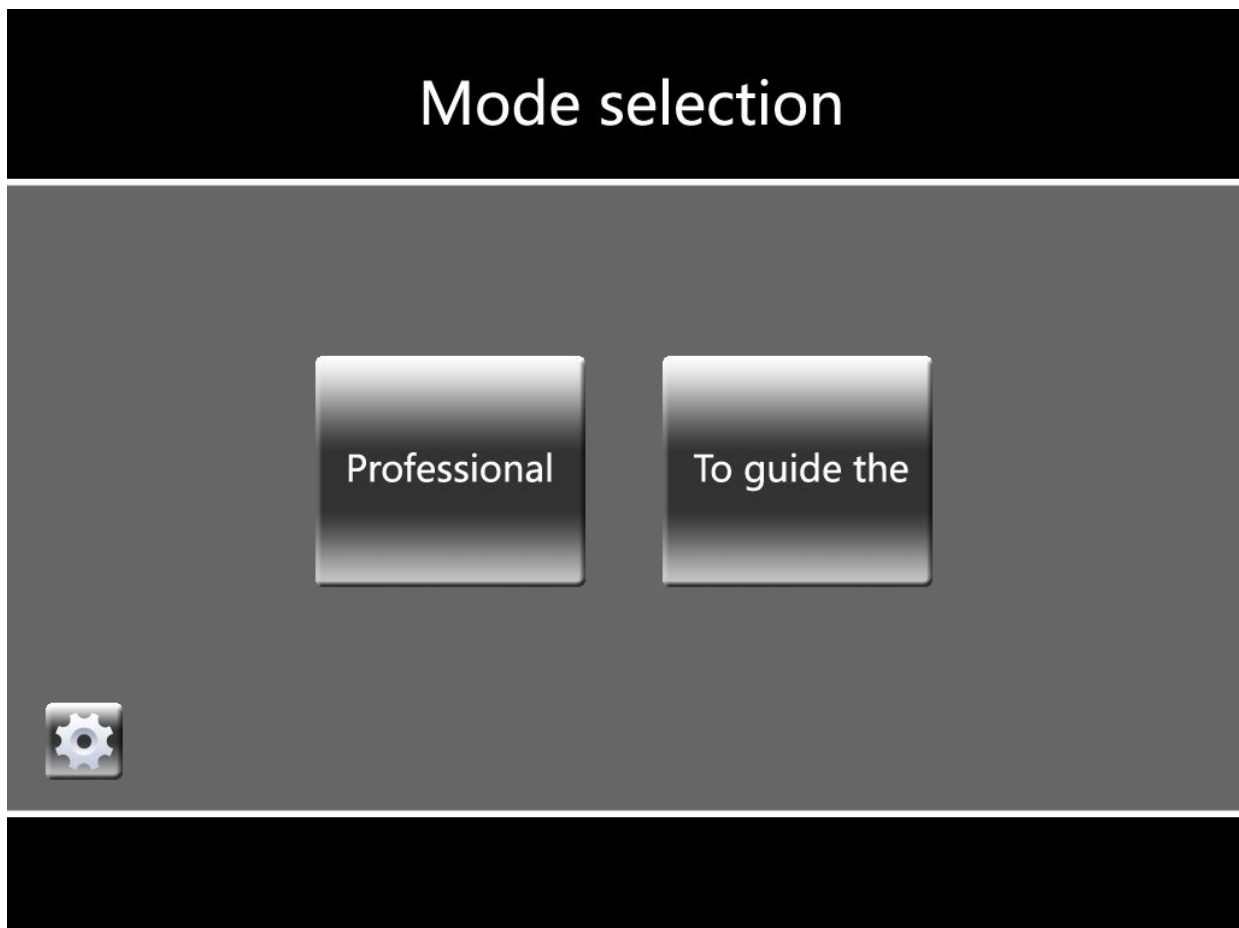



Figure two

In the operation mode selection interface: click professional to enter the professional work interface, and then click

[to guide the] enter the body parts guidance interface, click  Enter the parameter setting interface.

#### 4、 Guidance interface of each part

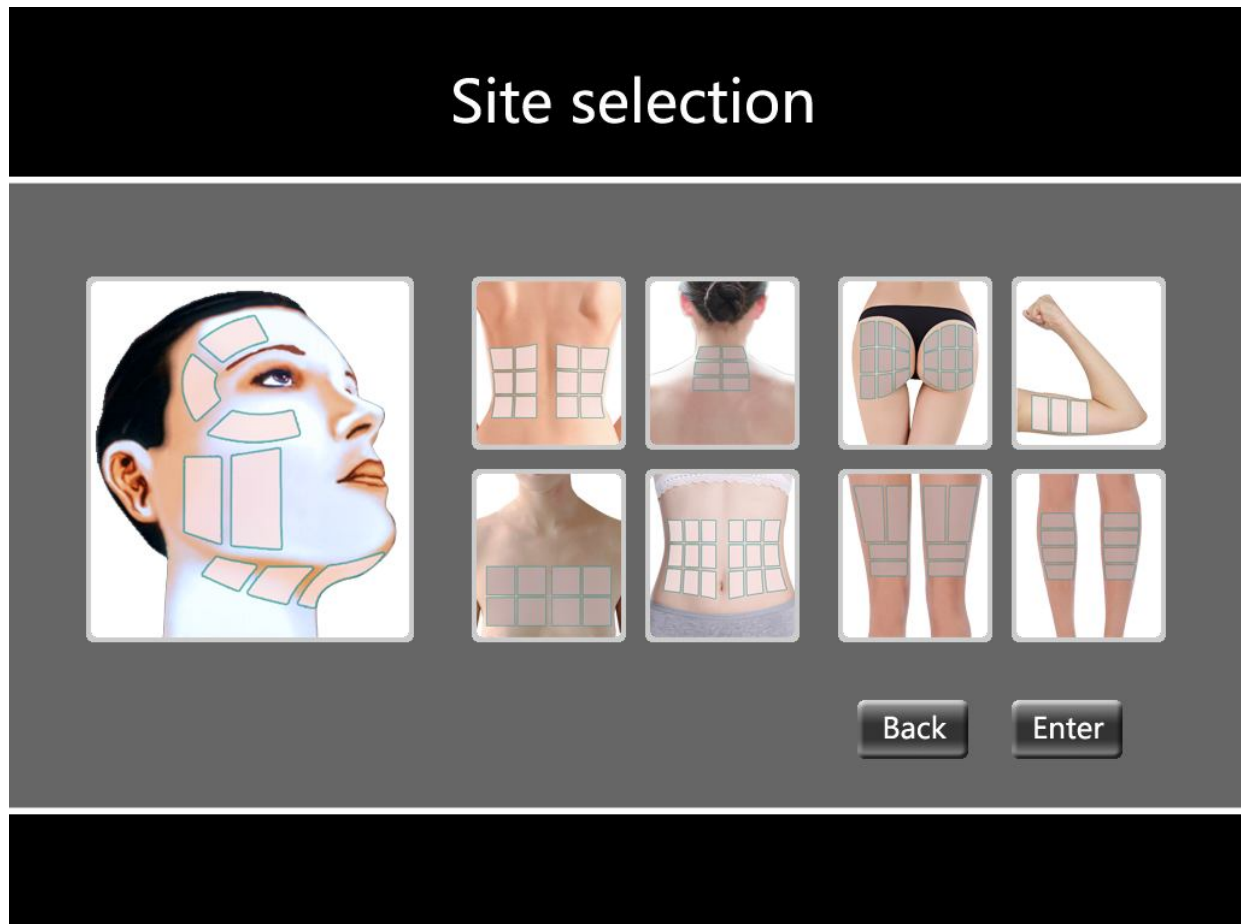




Figure three

Guide interface of each part: click the part to be operated, the orange check box will appear, click enter to enter the operation interface of each part, and click back to return to the operation mode selection interface.

#### 5、 Operation interface of each part

Operation interface of each part (take the face of Figure 4 as an example): [width] represents the total width of the energy area, [pitch] represents the distance between each line in the energy area, [length] represents the total length of the energy area of the ultrasonic knife, [clearance] represents the distance between the freezing point and the point in each line in the energy area

Spacing, [power] represents the energy of ultrasonic knife, click  (decrease)  (increase) adjust the size, [patient total] means to record the number of treatment, click [reset] to clear the current number of treatment, click [start] to start the instrument, click [stop] to stop the instrument, and click [back] to return to the guidance interface of each part.

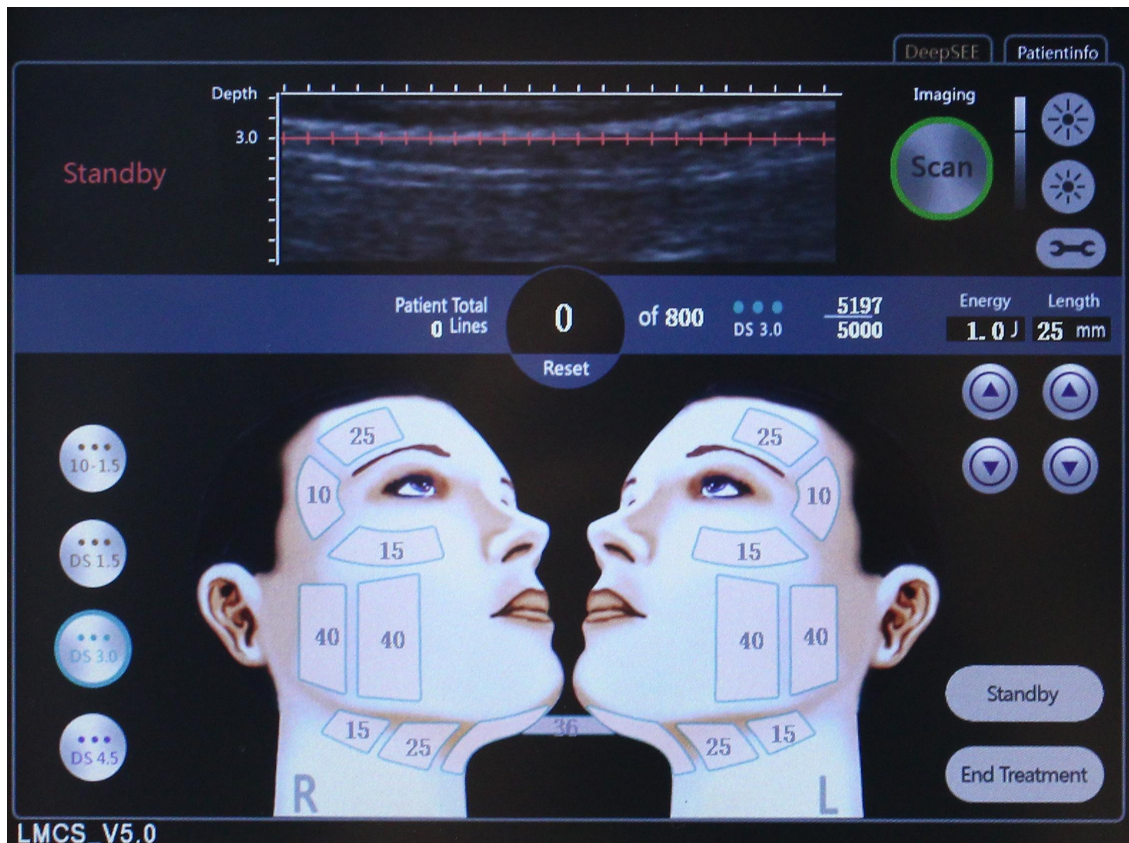


Figure four

Remarks: use range and energy reference of each probe

1.5 probe: neck 0.6j, temple 0.5j, forehead 0.5j; 3.0 probe: neck 1.0j, chin 1.0j, jaw 0.8j, cheek 1.0j, temple 0.7J, forehead 0.6j; 4.5 probe: neck 0.8j, chin 1.0j, jaw 0.7J, cheek 1.0j, temple 0.7J, forehead 0.4j;

6.0 probe: back 0.8j, chest 0.6j, abdomen 1.0j, hand 1.0j; 8.0 probe: chest 0.7J, back 0.8j, abdomen 1.0j; 10.0 probe: back 0.8j, leg 1.0j, abdomen 1.2J; 13.0 probe: abdomen 1.0j, leg 1.0j; 16.0 probe: abdomen 0.8j, leg 1.0j; the above is the recommended energy value of each operation part of each probe (if the customer can bear it, it can also be adjusted accordingly , it is suitable for the guests without tingling). 8、  
**Operation steps of the instrument**

1. Before using the instrument, use alcohol to disinfect and wipe the probe and dry the water drops on the face.
2. Apply the product (photosensitive gel) evenly to the area to be treated.
3. Before the operation of the instrument, replace the required treatment head, and the energy is from low to high to the capacity of the experimenter

The range of acceptance is good.

4. During the operation, the treatment head should be kept flat on the skin, and the operation spacing should be arranged closely.
5. In the process of operation, it is necessary to constantly ask the experimenter about the adjustment of comfort and energy to ensure

The experienter accepts the experience in a joyful state.

6. In the problem area, we can repeat and focus on strengthening treatment (2-3 times).

## 九、 Instrument setting and treatment reference

	Width	Clearance	Power	Pitch	Lenght	Proble matic skin	Severe skin
Normal skin	0-10	1.0-5.0	0.4-1.2	1.0-2.0	0~10	1 time/ cours of treatment	1 time / month 3 times / treatment course
Sensitive skin	0-10	1.0-5.0	0.3-1.0	1.5-2.4	0~15		

## 十、 Precautions and maintenance of the instrument:

1. After each use, please wipe the instrument with clean water, disinfect it with alcohol and keep it properly

(avoid scratches on the black film of the probe).

2. Before using the instrument, the plug with foundation must be used, and the power socket of the instrument must be true

Solid grounding.

3. Make sure the instrument voltage is suitable. If the local power supply voltage is unstable, we suggest the user

Increase the power matching power supply.

4. In order to ensure the therapeutic effect of the instrument and the normal service life, please use the original manufacturer uniformly

Specified fittings for or proposed use.

5. The instrument shall not be placed in the humid place or near the water source, nor exposed to the sun directly

Where the light hits.

6. Do not close the instrument to a strong heat source body, because this may affect the service life and positive of the instrument

Regular use.

- 8, in winter or dry weather, avoid bad contact when using.

Head flat).

9. Water, oil and other media shall not penetrate into the interior of the instrument, and shall not impact, knock or fall heavily to avoid damaging the instrument

Device.

10. After using the ultrasonic beauty instrument, please disinfect the probe with alcohol and disconnect the power supply.

## 十一、 Taboo for instrument users

Use this instrument cautiously for the following symptoms.

Please consult with your doctor or professional before use.

Details are as follows:

1. Before using the instrument, the skin of the physiotherapy area should be cleaned to prevent dirt from entering the skin with the ultrasonic wave or preventing the penetration of the ultrasonic wave. Before treatment, please remove all metal objects on your body first, so as not to affect the curative effect due to unexpected conditions.
2. It is better to use the medium with a certain viscosity, which is conducive to the better fusion of ultrasound and skin, so as to prevent the reflection caused by the gap and the better conduction of sound.
3. Each treatment area should not be repeated too much, up to three times, to avoid skin redness and swelling.
4. The degree of probe heat does not represent the output of ultrasonic power; the water or medicine with small concentration should not penetrate directly, otherwise it is easy to cause skin dryness.
5. When using the instrument, the probe shall not be close to the eyes, pass through the eyes, pregnant women and patients with serious heart disease.
6. Patients who are ill should also use this instrument with caution, except with the permission of a doctor.
7. Patients with malignant tumor, hemophilia or severe bleeding.
8. Patients with major diseases, skin diseases and infectious diseases should be used with caution.
9. Heart, brain, neck nerve center, spine, eyeball, hemorrhage, injection.
10. Hyperthyroidism, asthma, hypertension.
11. After 20-30 days of hyaluronic acid injection, ultrasonic scalpel therapy can be carried out.
12. Do not eat spicy food after ultrasonic scalpel treatment. Do not wash your face with overheated water or supercooled water for a week. Do not heat yoga, sauna, steamed face and facial massage (avoid facial squeezing). Apply a mask to replenish the water every day for a week. Pay attention to sunscreen. Do not use radiofrequency or light type devices for treatment within January.

## 十二、Common problems of instrument

- 1、There is no display on the instrument interface. Please check whether the power plug is not connected properly or whether the power switch is turned on.

2、 The instrument is normal but there is no energy output or the alarm is always on when the machine is started. Please check whether the handle wire is firmly connected to the host or whether the probe is installed in place.

### 十三、 Instrument maintenance

1. Please use alcohol to disinfect and clean the instrument after use and keep it properly.
2. Before use, the plug with foundation must be used, and ensure that the power socket of the instrument has been truly grounded.
3. The instrument voltage is adaptive. If the local power supply voltage is unstable, we suggest that the user increase the power matching regulated power supply.
4. Please use the specified accessories provided or recommended by the original manufacturer uniformly for the treatment effect and normal service life of the instrument.
5. Do not put it in the wet place or near the water source, and do not directly expose the instrument to the sun.
6. The instrument is close to a strong heat source, because it may affect the service life and normal use of the instrument.
7. Please remove all metal objects from your body first, so as not to affect the curative effect due to unexpected conditions.
8. To avoid poor contact, please pay attention to a certain degree of moisture in the place of contact with the skin, and wipe with water-based products or water to achieve the required effect.
9. When the device is not in use, please turn off the power switch of the instrument and ensure that the main power of the instrument is turned off before use to ensure the safety of the electrical products.
10. Use the instrument or train the operator in strict accordance with the instructions of the user manual.